

Appendix B

Landfill Cap Inspection Checklist Items for Landfill 1, Landfill 2, Landfill 4, and Garbage Dump and Fill Area East of Reilly

LANDFILL COVER INSPECTION CHECKLIST ITEMS

Specific Site Identification: Ft McClellan Landfill 1 Date: October 21, 2010

Landfill Cover Survey

1. Observe any areas on the cover that indicate signs of subsidence (e.g., obvious visible low spots on the cover surface where significant amounts of standing water can accumulate in puddles during significant precipitation events).

No areas of subsidence were observed across the cap surface.

2. Observe any signs of erosion on the landfill cover (e.g., during windy conditions observe any evidence of dust blowing off of the cover, check for any erosion caused by stormwater runoff). Any exposed debris?

No visible signs of erosion or exposed debris were observed during the cap inspection. An oak tree in the center of the landfill had died and had been topped by the wind. (See photo log). The rootball was not exposed and the fallen branches did not penetrate the cap surface.

3. Check the condition of the vegetative cover. (e.g. check for bare spots in the vegetative cover; Note whether no vegetation has grown or whether the vegetation has died and has not been re-established, check for abnormal growth of weeds that may crowd out natural vegetation).

Vegetation cover across the landfill was thick and healthy. No areas of abnormal growth were observed. No patches of uncovered soil were observed during the inspection.

Landfill Monument Benchmark Survey

1. Check the condition of the brass benchmark implanted on the concrete monuments; make sure that the concrete has not deteriorated around the monument foundation and that the etched mark is still visible.

- ☒ Monument 1, Comments: Good Condition, no damage.
- ☒ Monument 2, Comments: Good Condition, no damage..
- ☒ Monument 3, Comments: Good Condition, no damage.
- ☒ Monument 4, Comments: Good Condition, no damage.
- ☒ Monument 5, Comments: Good Condition, no damage.
- ☒ Monument 6, Comments: Good Condition, no damage.
- ☒ Monument 7, Comments: Monument is rotated 180° from proper orientation.
- ☒ Monument 8, Comments: Good Condition, no damage.

Inspected by: Joseph Owens

Signature: Joseph Owens Date: 10/21/2010

Approved by: _____

Signature: Julie A. Carver, P.E. Date: _____

Digitally signed by Julie A. Carver, P.E.
DN: cn=Julie A. Carver, P.E., o=Matrix
Design Group, Inc., ou,
email=julie_carver@matrixdesigngrou
p.com, c=US
Date: 2010.12.15 15:05:54 -07'00'

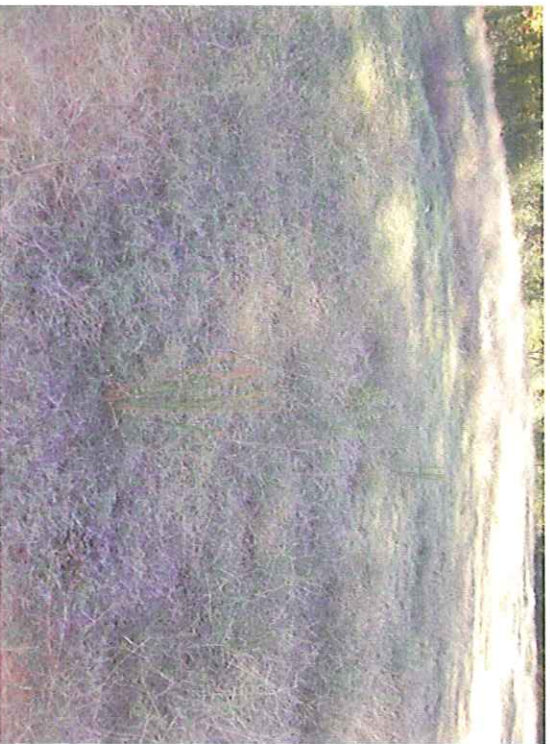
Photo Log



The monuments showed no signs of damage or vandalism.



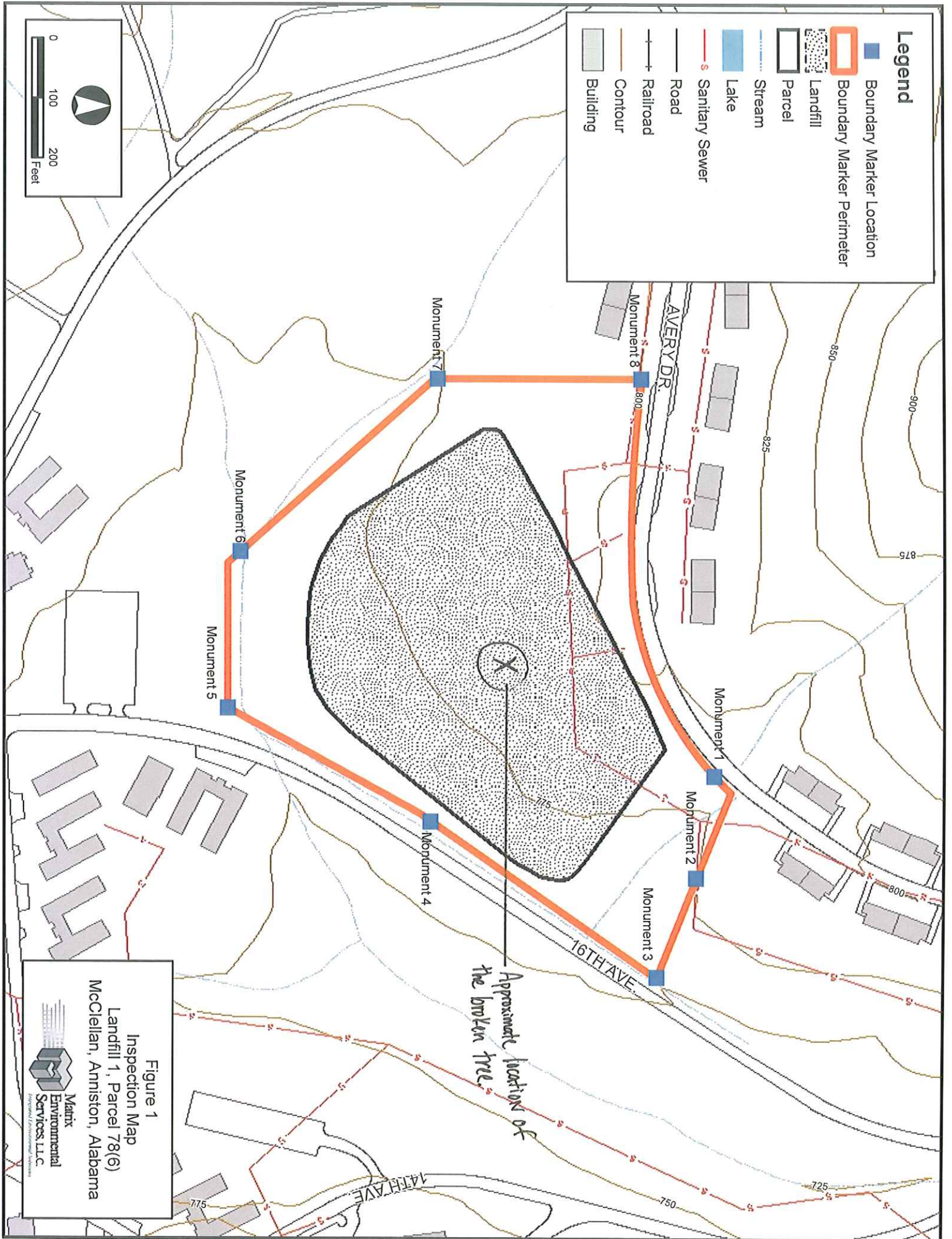
Vegetation covered the landfill cap surface.



No patches of abnormal growth were observed.



An old oak tree in the center of Landfill 1 died and broke in half; root ball was not exposed and cap surface not damaged.



LANDFILL COVER INSPECTION CHECKLIST ITEMS

Specific Site Identification: McClellan Landfill 2 Date: October 21, 2010

Landfill Cover Survey

1. Observe any areas on the cover that indicate signs of subsidence (e.g., obvious visible low spots on the cover surface where significant amounts of standing water can accumulate in puddles during significant precipitation events).

No areas of subsidence were observed during the inspection.

2. Observe any signs of erosion on the landfill cover (e.g., during windy conditions observe any evidence of dust blowing off of the cover, check for any erosion caused by stormwater runoff). Any exposed debris?

No signs of erosion were observed during the inspection. No signs of exposed debris were observed. The cap appeared to be in good condition.

3. Check the condition of the vegetative cover. (e.g. check for bare spots in the vegetative cover; Note whether no vegetation has grown or whether the vegetation has died and has not been re-established, check for abnormal growth of weeds that may crowd out natural vegetation).

There were no observed bare spots. No abnormal growth of weeds or grasses were observed during the inspection. The cap was covered with thick vegetation.

Landfill Monument Benchmark Survey

1. Check the condition of the brass benchmark implanted on the concrete monuments; make sure that the concrete has not deteriorated around the monument foundation and that the etched mark is still visible.

☒ Monument 1, Comments: Good Condition, no damage.

☒ Monument 2, Comments: Good Condition, no damage.

☒ Monument 3, Comments: Good Condition, no damage.

☒ Monument 4, Comments: Good Condition, no damage.

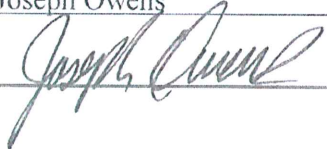
☒ Monument 5, Comments: Good Condition, no damage.

☒ Monument 6, Comments: Good Condition, no damage.

☒ Monument 7, Comments: Good Condition, no damage.

☒ Monument 8, Comments: Good Condition, no damage.

Inspected by: Joseph Owens

Signature:  Date: 10/21/2010

Approved by: _____

Signature: Julie A. Carver, P.E. Digitally signed by Julie A. Carver, P.E.
DN: cn=Julie A. Carver, P.E., o=Maine Department of
Environmental Protection, email=jcarver@dep.state.me.us,
date=2010.12.15 15:09:11 -0500 Date: _____



The cap surface is covered with vegetation and fallen leaves.



No signs of erosion were observed during the inspection.



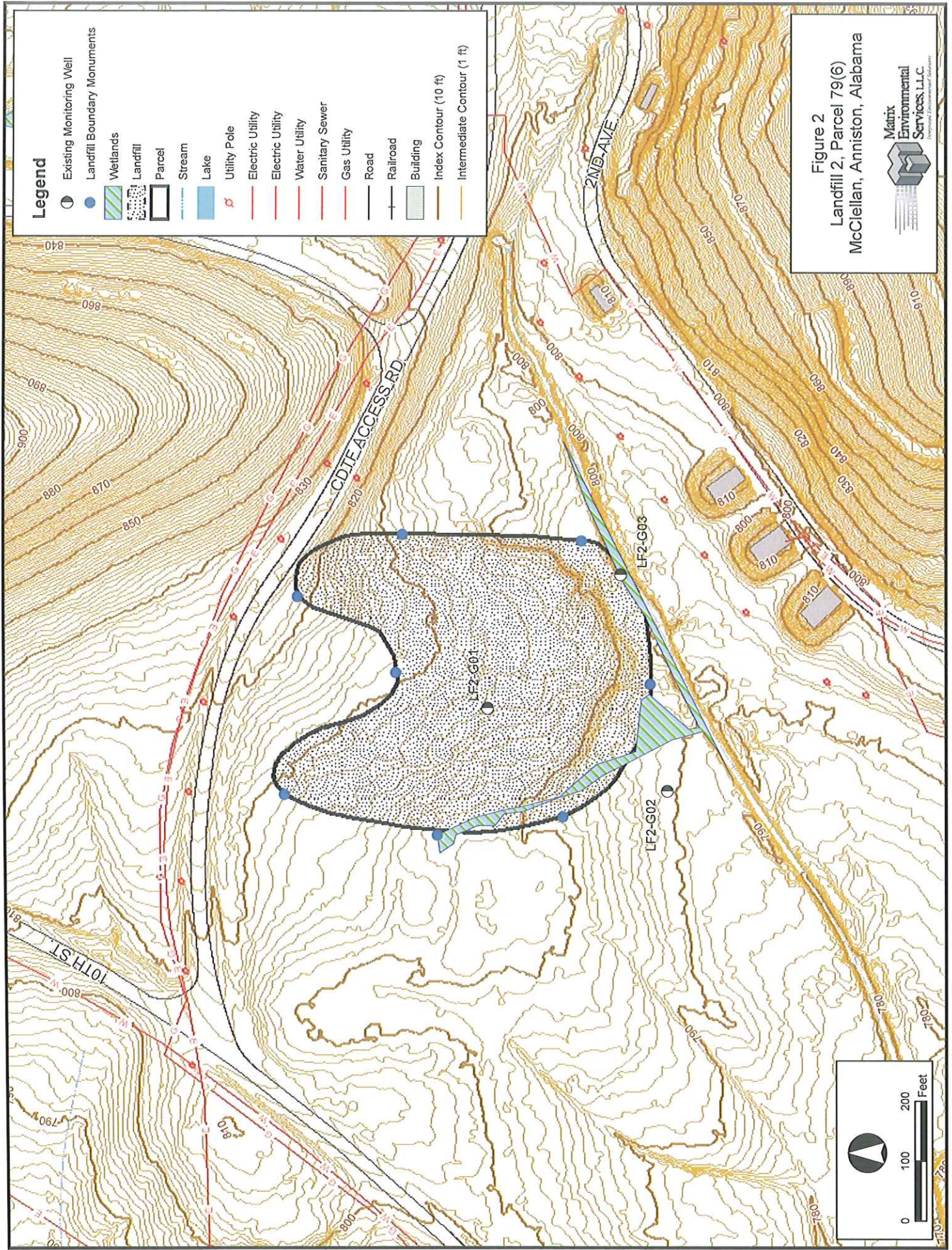
The cap appeared to be in good condition.



No signs of washout or erosion were observed.



The boundary markers were in good condition.



LANDFILL COVER INSPECTION CHECKLIST ITEMS

Specific Site Identification: McClellan Landfill 4 Date: October 21, 2010

Landfill Cover Survey

1. Observe any areas on the cover that indicate signs of subsidence (e.g., obvious visible low spots on the cover surface where significant amounts of standing water can accumulate in puddles during significant precipitation events).

Low areas along the western edge of the landfill were repaired in September 2010. Fill material was brought in from the Borrow Area to allow for positive drainage and the disturbed area was seeded and mulched.

2. Observe any signs of erosion on the landfill cover (e.g., during windy conditions observe any evidence of dust blowing off of the cover, check for any erosion caused by stormwater runoff). Any exposed debris?

No visible signs of erosion were observed. No signs of exposed debris were observed during the inspection.

3. Check the condition of the vegetative cover. (e.g. check for bare spots in the vegetative cover; Note whether no vegetation has grown or whether the vegetation has died and has not been re-established, check for abnormal growth of weeds that may crowd out natural vegetation).

Two areas, both approximately 12-feet by 12-feet, were observed in the northeast corner of the landfill. (See attached photos and map.) The areas were void of vegetation and appeared to be covered with deer hoof prints. No abnormal growth of weeds was observed.

Landfill Monument Benchmark Survey

1. Check the condition of the brass benchmark implanted on the concrete monuments; make sure that the concrete has not deteriorated around the monument foundation and that the etched mark is still visible.

- ☒ Monument 1, Comments: Good Condition, no damage.
- ☒ Monument 2, Comments: Good Condition, no damage.
- ☒ Monument 3, Comments: Good Condition, no damage.
- ☒ Monument 4, Comments: Good Condition, no damage.
- ☒ Monument 5, Comments: Good Condition, no damage.
- ☒ Monument 6, Comments: Good Condition, no damage.
- ☒ Monument 7, Comments: Good Condition, no damage.
- ☒ Monument 8, Comments: Good Condition, no damage.
- ☒ Monument 9, Comments: Good Condition, no damage.

Inspected by: Joseph Owens

Signature: _____

Joseph Owens

Date: _____

10/21/2010

Approved by: _____

Signature: _____

**Julie A.
Carver, P.E.**

Digitally signed by Julie A. Carver, P.E.
DN: cn=Julie A. Carver, P.E., o=Matrix
Design Group, Inc., ou,
email=julie_carver@matrixdesigngrou
p.com, c=US
Date: 2010.12.15 15:29:54 -07'00'

Date: _____

Photo Log



The monuments across the landfill were in good condition.



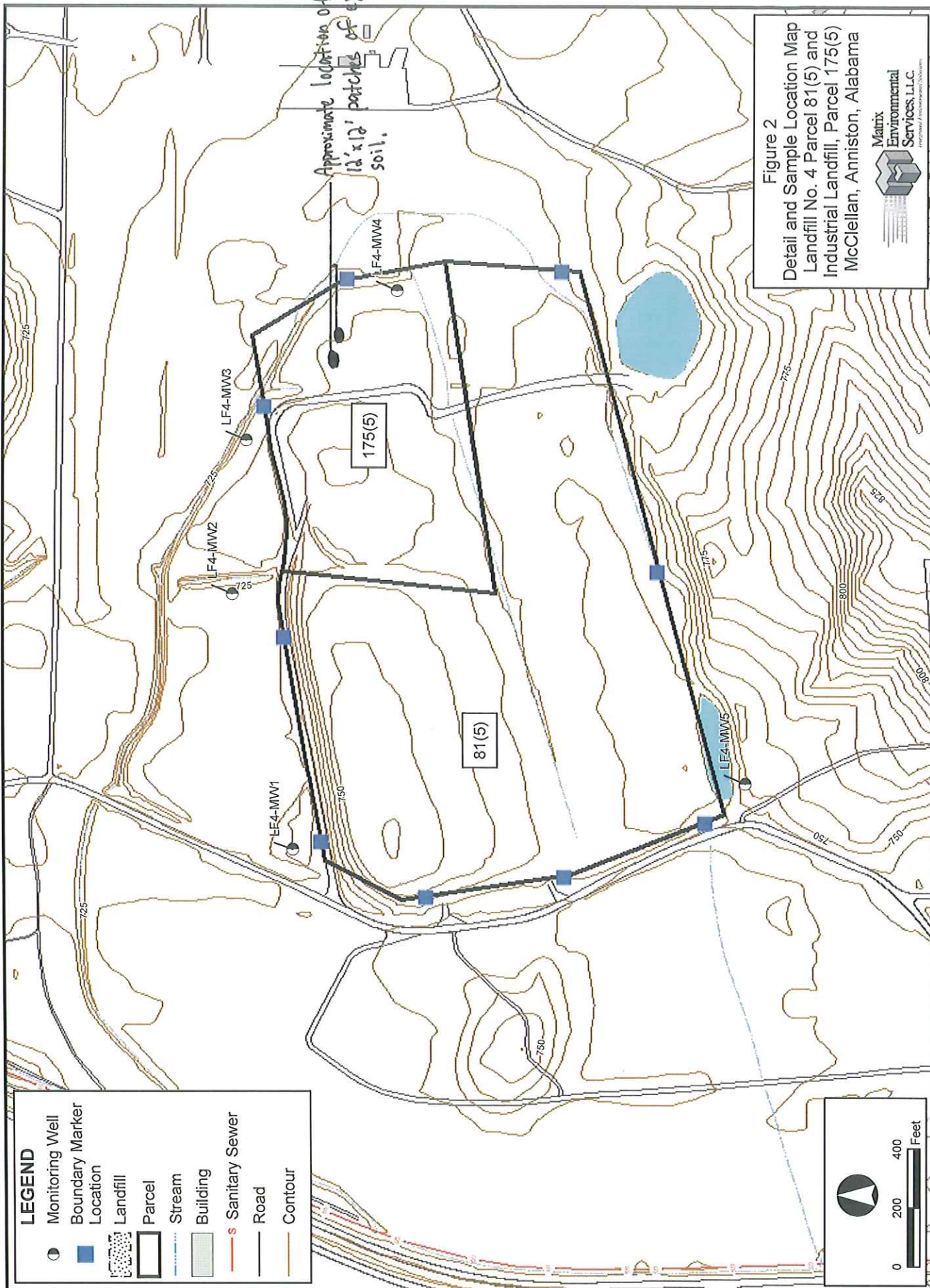
First area in the northeast corner of the landfill void of vegetation.



Second area in the northeast corner of the landfill void of vegetation and full of deer hoof prints.



Area along the western perimeter of the landfill repaired, seeded, and mulched to allow for positive drainage.



LANDFILL COVER INSPECTION CHECKLIST ITEMS

Specific Site Identification: McClellan Landfill Garbage Dump and Fill Area East of Reilly

Date: October 20, 2010

Landfill Cover Survey

1. Observe any areas on the cover that indicate signs of subsidence (e.g., obvious visible low spots on the cover surface where significant amounts of standing water can accumulate in puddles during significant precipitation events).

No areas of subsidence were observed during the inspection.

2. Observe any signs of erosion on the landfill cover (e.g., during windy conditions observe any evidence of dust blowing off of the cover, check for any erosion caused by stormwater runoff). Any exposed debris?

No signs of erosion were observed during the inspection. No signs of exposed debris were observed. The cap appeared to be in good condition.

3. Check the condition of the vegetative cover. (e.g. check for bare spots in the vegetative cover; Note whether no vegetation has grown or whether the vegetation has died and has not been re-established, check for abnormal growth of weeds that may crowd out natural vegetation).

The areas with limited vegetation, located on the western perimeter near the entrance to the Garbage Dump, were covered with a layer of topsoil, seeded, and mulched with wheat straw. There were no areas of abnormal growth observed.

Landfill Monument Benchmark Survey

1. Check the condition of the brass benchmark implanted on the concrete monuments; make sure that the concrete has not deteriorated around the monument foundation and that the etched mark is still visible.

☒ Monument 1, Comments: Good Condition, no damage.

☒ Monument 2, Comments: Good Condition, no damage.

☒ Monument 3, Comments: Good Condition, no damage.

☒ Monument 4, Comments: Good Condition, no damage.

☒ Monument 5, Comments: Good Condition, no damage.

☒ Monument 6, Comments: Good Condition, no damage.

☒ Monument 7, Comments: Good Condition, no damage.

☒ Monument 8, Comments: Good Condition, no damage.

Inspected by: Joseph Owens

Signature:  Date: 10/20/2010

Approved by: _____

Signature: Julie A. Carver, P.E. Date: _____

Digitally signed by Julie A. Carver,
P.E.
DN: cn=Julie A. Carver, P.E., o=Matrix
Design Group, Inc., ou,
email=julie_carver@matrixdesigngro
up.com, c=US
Date: 2010.12.15 15:31:51 -07'00'



No abnormal growth of weeds or grasses were observed during the cap inspection.



The area on the western edge, underneath the trees, with limited vegetation was seeded and mulched.



The boundary markers were all in good condition.

